

Free Service - VirtualDJ

In this tutorial we are going to be taking a look at how to broadcast using VirtualDJ on our free service.

Signing Up

▼ ENTER YOUR DETAILS BELOW

● Full Name	<input type="text"/>
● Username	<input type="text"/>
● Password	<input type="text"/>
● Retype Password	<input type="text"/>
● Email	<input type="text"/>
● Retype Email	<input type="text"/>
<input type="checkbox"/> I agree to the Terms of Use and Privacy Policy	
<input type="button" value="CREATE MY ACCOUNT"/>	

If you haven't already signed up for an account go to <http://www.listen2myradio.com/signup.php> and go through the whole installation process.

Getting The Details

New custom flash player more then 10 skins available(shoutcast1,2,icecast,aac,mp3,ogg Support)
try it : [here](#)

Want to move your radio to your site?, **Get Premium Now:**
Premium radio types : Shoutcast 1 , Shoutcast 2 , Icecast
Hosting Packages: for Linux hosting : [click here](#) for Windows hosting : [click here](#)

username: xxtoni
Stream status: **Stream is ON**
Server type : shoutcast
D.N.A.S panel of your radio here username:admin password:
IP: 95.154.254.129 PORT: 30436 Streaming password:

Stream:	Stream Installation	Stream Details	Turn On/Off	Change Server
Page:	Update text	Add Logo	Chat / clear / remove	Page Design
Page info:	Change Player	Change info line	Remove info line	All Stream Links
Blog:	Enable/Disable Blog	Add Post	Remove Post	Disable Comments
Gallery:	Enable/Disable Gallery	Add Image	Remove Image	
Advanced:	Change Server Type	ON/OFF Code(soon)	View Statistics	
General:	Country	Account Password	Terms Of Use	Logout
Addons:	Remove ads Remove chat Stream always ON			Learn how to stream video try it today

After you have gone through the whone installation setup make sure that the server is on. To do so refresh the Listen2MyRadio control panel page and make sure it says Stream is ON under Stream Status.

After that go to Stream Details.

Start VirtualDJ

If you haven't already, install VirtualDJ. It is a straightforward installation like with most software, you basically just click Next.

Once the installation is done open up VirtualDJ

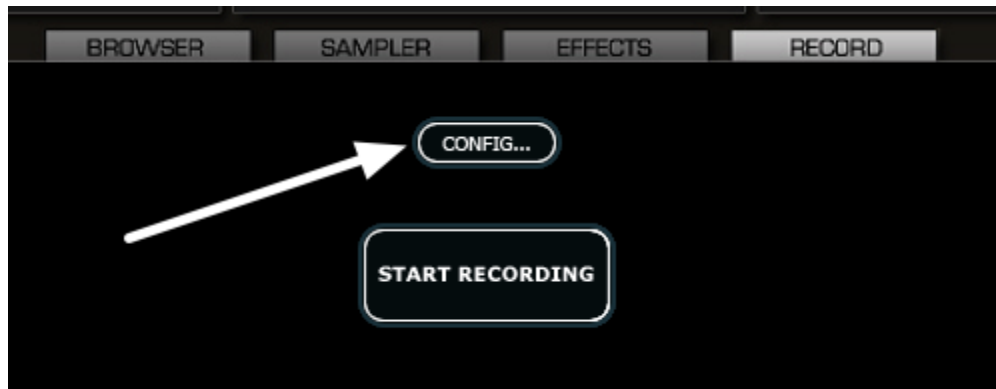
NOTE: You can only do broadcasting with VirtualDJ Broadcaster and VirtualDJ Pro. The free Home edition of VirtualDJ therefore won't work.

Configuring VirtualDJ for broadcasting



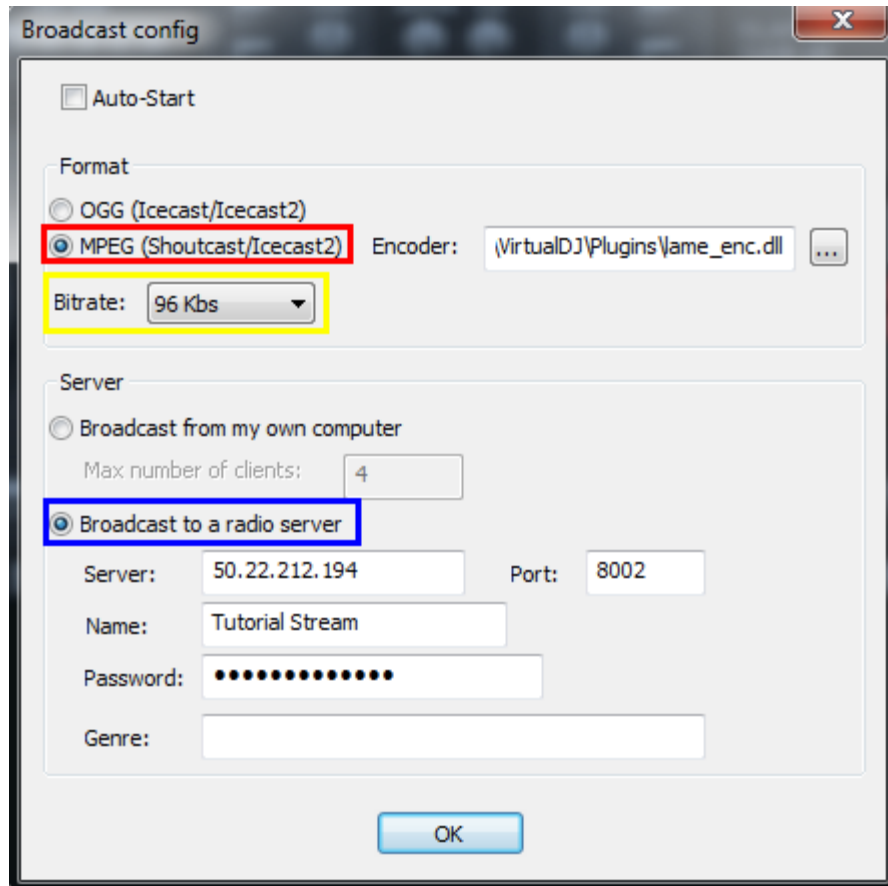
Once you open up VirtualDJ first go to the **Record** tab.

Configuring VirtualDJ for broadcasting - 2



Once you're in the Record tab click on the **Config** button.

Configuring VirtualDJ for broadcasting - 3



Now it's time to configure VirtualDJ to broadcast to the Listen2MyRadio server.

First set the **format** to **MPEG (Shoutcast/Icecast2)**.

Then set the **bit rate** to anything you like, **up to 128kbps**.

Under server choose **Broadcast to a radio server**.

Now go back to **Stream Details** in the Listen2MyRadio control panel and get all the required details.

For the **Server** field go to Stream Details and get the **IP**. Once you have the **IP type** it into the Server field. Then get the port from Stream Details and type it into the **Port** field. Under Name you can enter the desired name of your radio station.

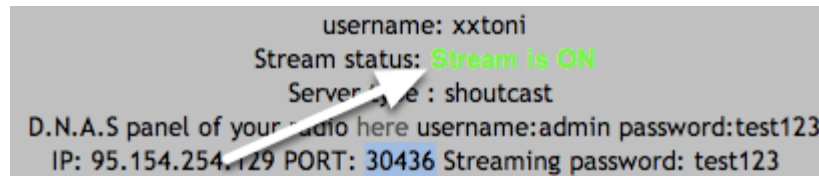
For the **password** you need to enter the streaming or broadcaster password you used when you setup your radio account.

You can enter your music genre under **Genre** or just leave it empty.

After you have entered all the details click on OK and the window will close.

NOTE: If you have trouble connecting and get errors when you try to connect please come back to this step (Config) and **TYPE** in the Server IP, Port and password. A lot of users copy these and also copy a blank space with the values which prevents the connection. Either carefully copy the details in or type them.

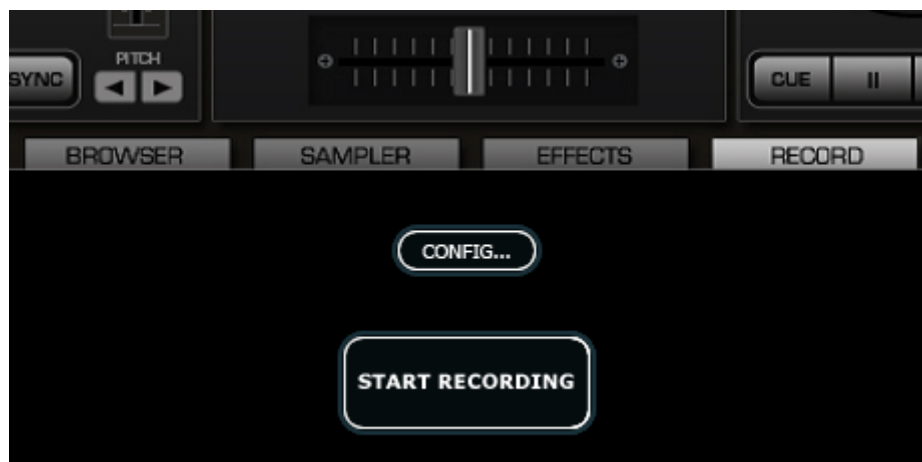
Checking Server Status



```
username: xxtoni
Stream status: Stream is ON
Server name : shoutcast
D.N.A.S panel of your radio here username:admin password:test123
IP: 95.154.254.129 PORT: 30436 Streaming password: test123
```

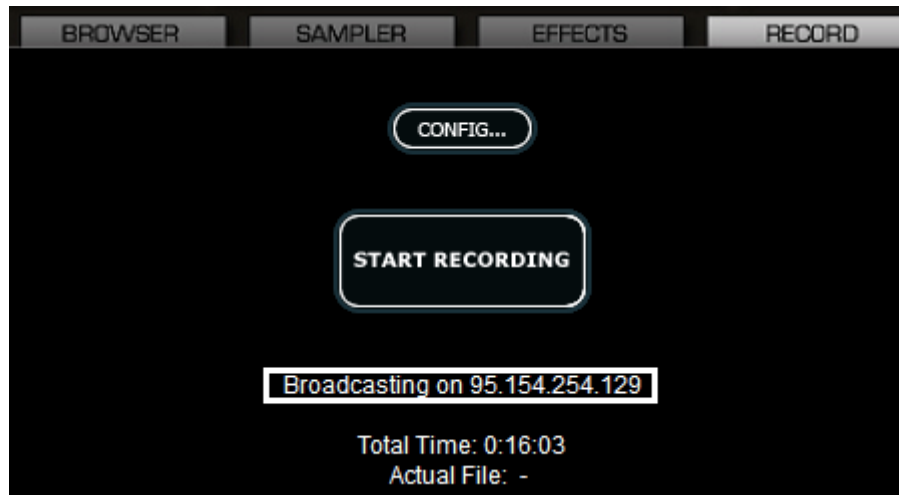
Now that the config is done go back to the Listen2MyRadio control panel and refresh the page. Make sure that it still says Stream status: Stream is ON. If it doesn't you need to turn the server ON again by going to Turn On/Off.

Start Broadcasting



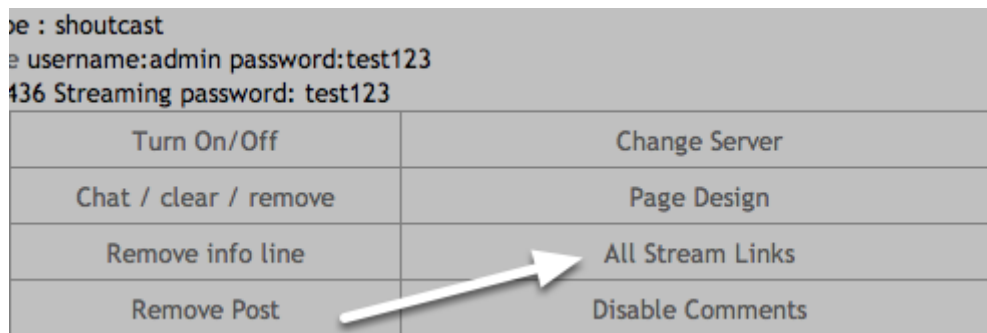
Now return to VirtualDJ and click on the **Start Recording Button**.

Check If Broadcasting Is Working



Once you clicked on Start Recording underneath it some text will appear. If you see: **Broadcasting on:** [Your IP] then you are connected to the server and broadcasting.

Tune In



Now that you're broadcasting it's time to tune in to your stream. To do that go to the Listen2MyRadio control panel and click on **All Stream Links**. Scroll down and you will see a list of links on which your radio can be heard.

NOTE: Free accounts can't embed or use direct listening links. While you may be able to hear the stream on the same network on which the broadcasting computer is, noone outside your network will be able to hear it. They must use one of the links located under All Stream Links. If you need to embed you will need one of our premium packages.