

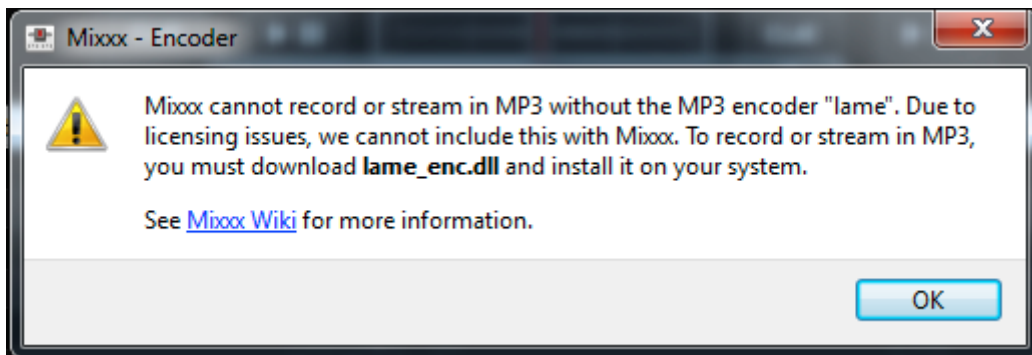
Free Service - Broadcasting With Mixxx

In this tutorial we are going to explain how to broadcast to our free service using Mixxx.

Download and Install Mixxx

To get started first install Mixxx. Head over to <http://mixxx.org/download/> and download Mixxx for your operating system. It is cross-platform compatible and available for Windows, Mac OS and Linux. After the download is done install it like you would any other program.

Installing The MP3 Encoder



After the installation is done you need to download and install the MP3 encoder. Without it you won't be able to broadcast so this step is very important. When you try to enable Live broadcasting in Mixxx without the MP3 encoder installed you will get an error like the one above.

Download The MP3 Encoder

Downloads

LAME 3.98.2

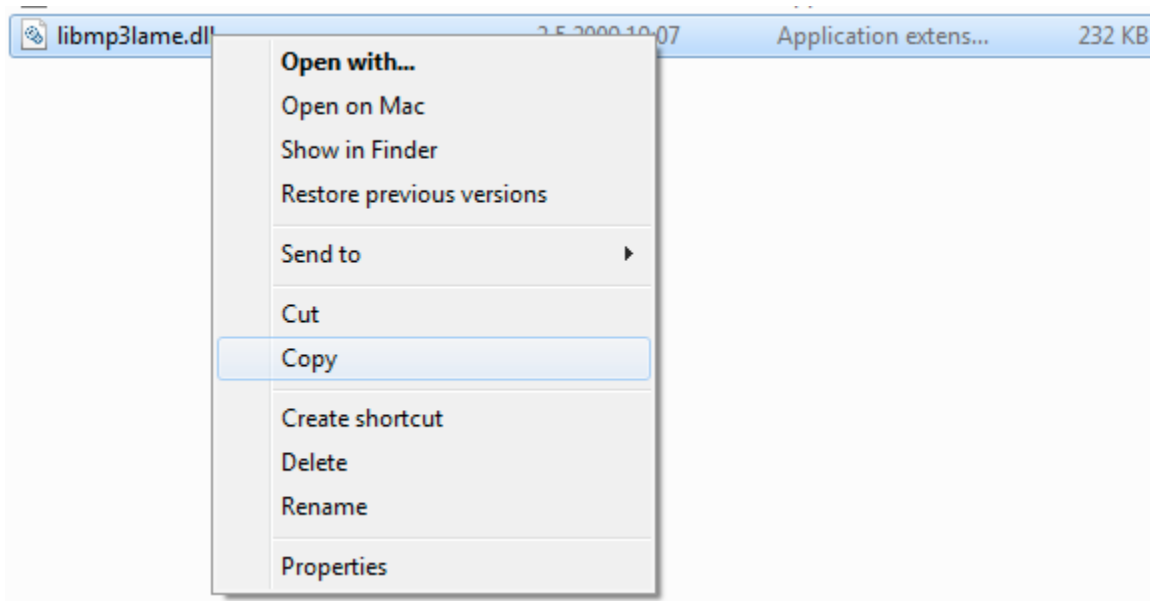
[LAME 3.98.2 \(409k\)](#)

LAME 3.98.4

[LAME 3.98.4 \(335k\)](#)

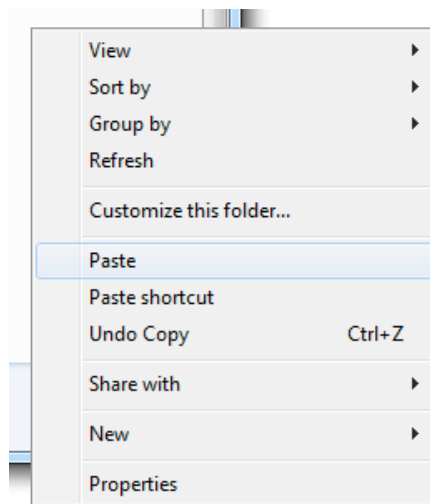
Head over to <http://lame.bakerweb.biz/> and scroll down. Under Downloads click on the first download link to start the download of the encoder.

Locating The Encoder



Once you have downloaded the file extract it and you should see two folders - x64 and x86. Depending on whether your system is x64 or x86 you will need to go into the proper folder. Once you're in the folder you should see the **libmp3lame.dll** file. Copy that file.

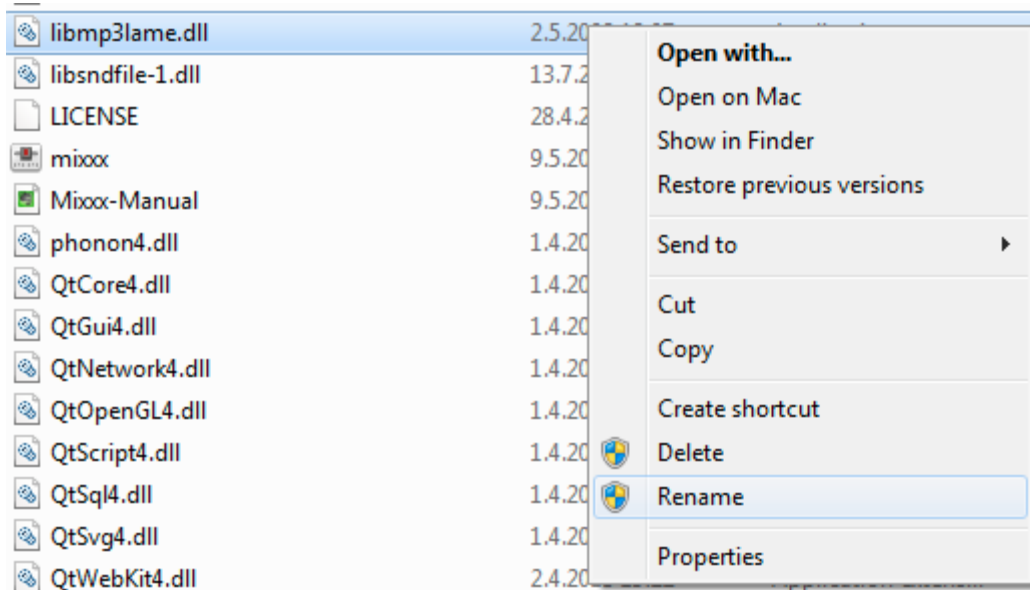
Copy The Encoder Into The Mixxx Folder



Once you have copied the file go to **My Computer**, the **C: drive** and into **Program Files**. If you're running a x64 system you will have 2 program files folders, go into the **Program Files (x86)** folder. Once you're in there look for the **Mixxx** folder. Once you're in the Mixxx folder paste the

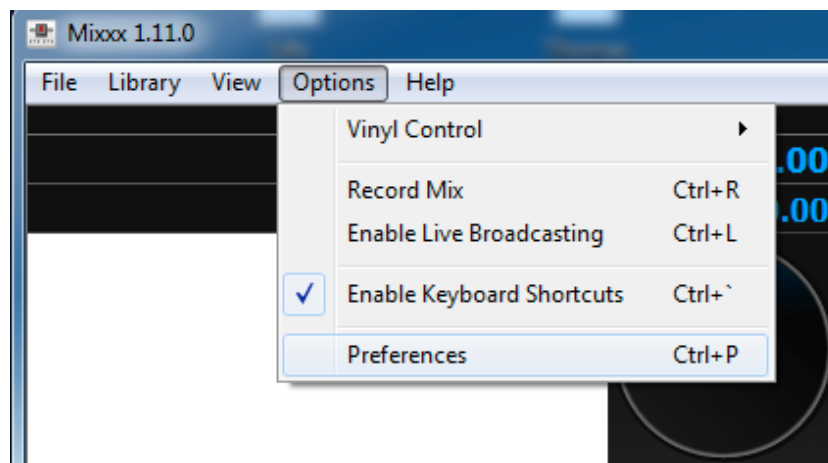
libmp3lame.dll file there.

Rename The Encoder



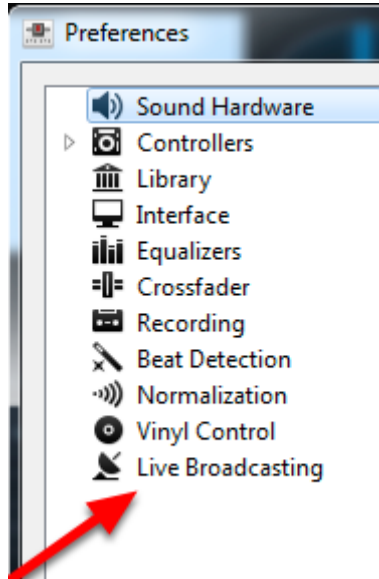
Once you have pasted libmp3lame.dll into the folder find it and rename it to **lame_enc.dll**

Configure Live Broadcasting



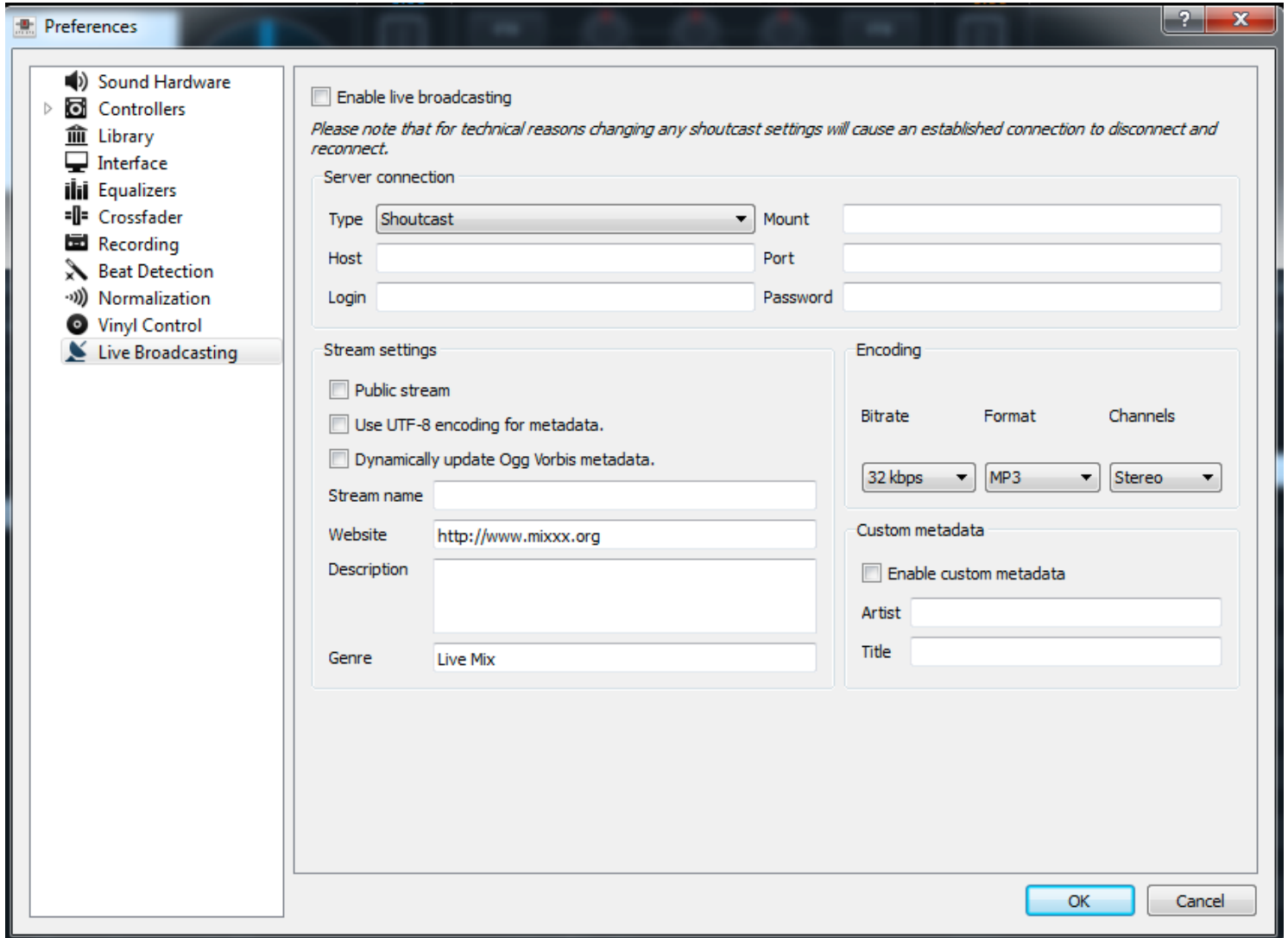
Now that we have installed the encoder we can start configuring the connection parameters. To do that go to Mixxx and click on Options in the top menu and then click on Preferences. A new window will pop up.

Live Broadcasting



In the new window look for the Live Broadcasting Option.

Entering The Details



The screenshot shows the 'Preferences' dialog box with the 'Live Broadcasting' section selected in the left-hand menu. The main area contains the following settings:

- Enable live broadcasting
- Please note that for technical reasons changing any shoutcast settings will cause an established connection to disconnect and reconnect.*
- Server connection**
 - Type: Shoutcast (dropdown)
 - Mount: [Empty text box]
 - Host: [Empty text box]
 - Port: [Empty text box]
 - Login: [Empty text box]
 - Password: [Empty text box]
- Stream settings**
 - Public stream
 - Use UTF-8 encoding for metadata.
 - Dynamically update Ogg Vorbis metadata.
 - Stream name: [Empty text box]
 - Website: <http://www.mixxx.org>
 - Description: [Empty text box]
 - Genre: Live Mix
- Encoding**

Bitrate	Format	Channels
32 kbps (dropdown)	MP3 (dropdown)	Stereo (dropdown)
- Custom metadata**
 - Enable custom metadata
 - Artist: [Empty text box]
 - Title: [Empty text box]

Buttons: OK, Cancel

In Live Broadcasting on the right side you will now have a number of fields and options to configure Mixxx to broadcast to your server. Now get the details we earlier got from the control panel.

Configuring Mixxx To Broadcast

Enable live broadcasting

Please note that for technical reasons changing any shoutcast settings will cause an established connection to disconnect and reconnect.

Server connection

Type: Mount:

Host: Port:

Login: Password:

Stream settings

Public stream

Use UTF-8 encoding for metadata.

Dynamically update Ogg Vorbis metadata.

Stream name:

Website:

Description:

Genre:

Encoding

Bitrate: Format: Channels:

Custom metadata

Enable custom metadata

Artist:

Title:

Into the **host** field enter the IP address you got from the control panel.

Under **login** enter **admin**

Under **Password** enter the broadcasting password of your radio.

Under **Port** enter the port of your radio.

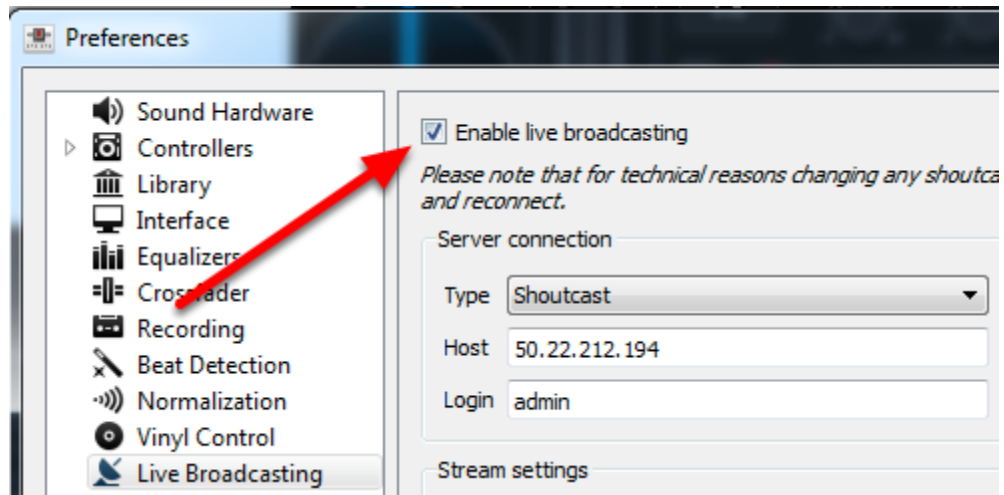
Leave the **mount** field empty.

Under **Stream Settings** you can set whether your station should be listed on shoutcast.com by checking the **public stream** checkbox.

Under **Encoding** you can set the bit rate of your package. We recommend that you use bit rates of 128kbps and below.

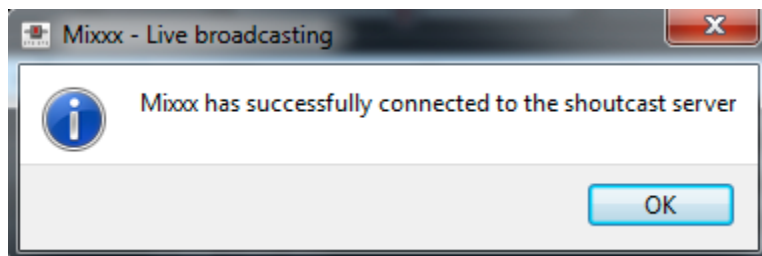
NOTE: Please note that sometimes when copying in these details users also copy along a blank space. If this happens to you it can cause connection errors which will prevent you from broadcasting. If for some reason you can't connect to the server first make sure that the server is on by going to the Listen2MyRadio control panel, refresh the page and making sure that it says that it's on and then typing the details into Mixxx instead of copying them.

Enable Live Broadcasting



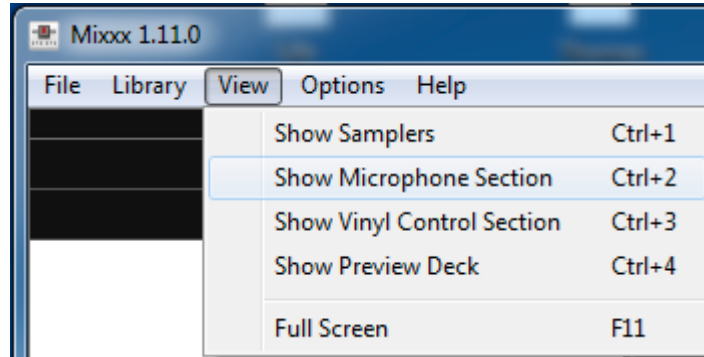
After you have entered and configured all of the details click on **Enable live broadcasting** and then click OK in the bottom right corner.

Successfully Connected



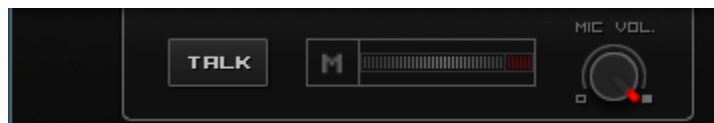
If you did everything correctly a few seconds after you click the OK button you should see the window above. If you get an error instead of this window go back to the configuration window and double check the settings and make sure that everything is correct. Also make sure that there are no blank spaces before or after the IP, Port or password. The safest way to ensure that is to type them all in manually.

Enabling Voice Over



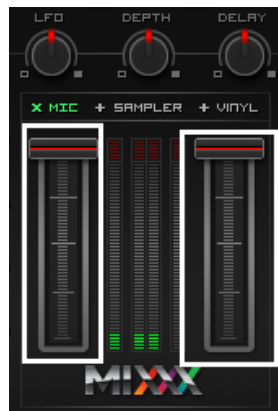
To enable voice over click on **View** in the top menu in mix and click on **Show Microphone Section**.

Enabling Voice Over - 2



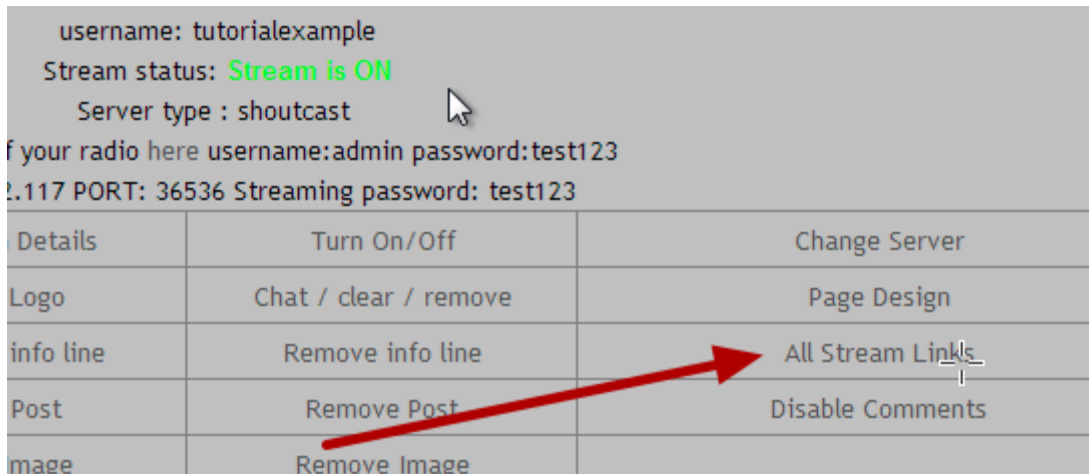
Now a new option should have appeared in Mixxx. By clicking on the **TALK** button your microphone feed will be included into the stream. You can also control the microphone volume using the knob under **MIC VOL.**

Enabling Voice Over - 3



If you find that the music is too loud and that you can't properly hear the microphone you can lower it using the controllers above. If your current song is in the left deck you lower the left controller and same for the right deck and the right controller.

Listening To Your Stream

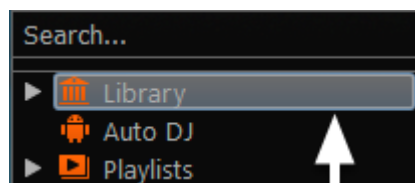


Now that you are broadcasting you can start sending out your broadcasting links to your listeners.

To get the broadcasting links just go to the Listen2MyRadio control panel and click on **All Stream Links**.

Once you are inside All Stream Links you will see a list of links through which your radio can be accessed and heard. You can click on any of those links and you will be taken to your radio page. Click on the player shown there and if you did everything correctly so far you will hear the music you are playing in Mixxx.

Playing Songs



When you first installed Mixxx you were prompted to select the folder that holds your music. If you did that all of the music from that folder will now be listed in the Library option in Mixxx. On the right you should now see all the songs from the folder you selected.

If you want to change the library folder go to **Options** in the top menu bar, click on **Preferences** and select **Library** on the left. The first option will be to change the library folder or **music directory**.

Playing Songs



Once you have songs listed in Mixxx just double click on one and it will load into the left hand deck. After that you can just click on the left play button and it will start playing. Because of the way Mixxx works after this song is done the playing will stop. If you want to play an entire playlist you need to use the AutoDJ feature in Mixxx

Mixxx AutoDJ (Running Playlists)

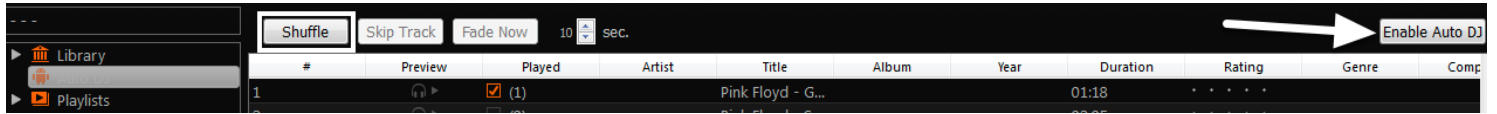
Search...	Preview	Played	Artist	Title
▶ Library		<input type="checkbox"/> (0)		na zapadu ni'ta novo
▶ Auto DJ		<input type="checkbox"/> (0)		Crazy from the Message
▶ Playlists		<input type="checkbox"/> (0)		Crazy from the Message
▶ Crates		<input type="checkbox"/> (0)		Crazy from the Message
▶ Browse		<input type="checkbox"/> (0)		Pink Floyd - Another brick in the wall
▶ Recordings		<input type="checkbox"/> (0)		Pink Floyd - Get your filthy hands of
▶ History		<input type="checkbox"/> (0)		Pink Floyd - Hey you
▶ Analyze		<input type="checkbox"/> (0)		Pink Floyd - Not now John

If you want to play a whole playlist instead of having to select each song and load it into the deck yourself you need to use the Mixxx AutoDJ feature. First go to the **Library** tab in Mixxx and select the songs you want to play as a playlist. Then just drag and drop them onto the AutoDJ option in the left hand menu as illustrated in the image above.

Starting Playlist

Once you have added files into the AutoDJ tab click on the AutoDJ option.

Configuring Mixxx AutoDj



Once you're in the Mixxx AutoDJ option you may want to set the order of your songs. To do that just click on the song that you want to order and then drag and drop it to the desired position in the playlist. If you want the songs to play randomly click on the **Shuffle** option.

Once you have added songs and ordered them the way you like click on the **Enable AutoDJ** option on the right to start playing the songs.

The songs will now start playing and will continue to play until there are no more songs in the AutoDJ playlist.